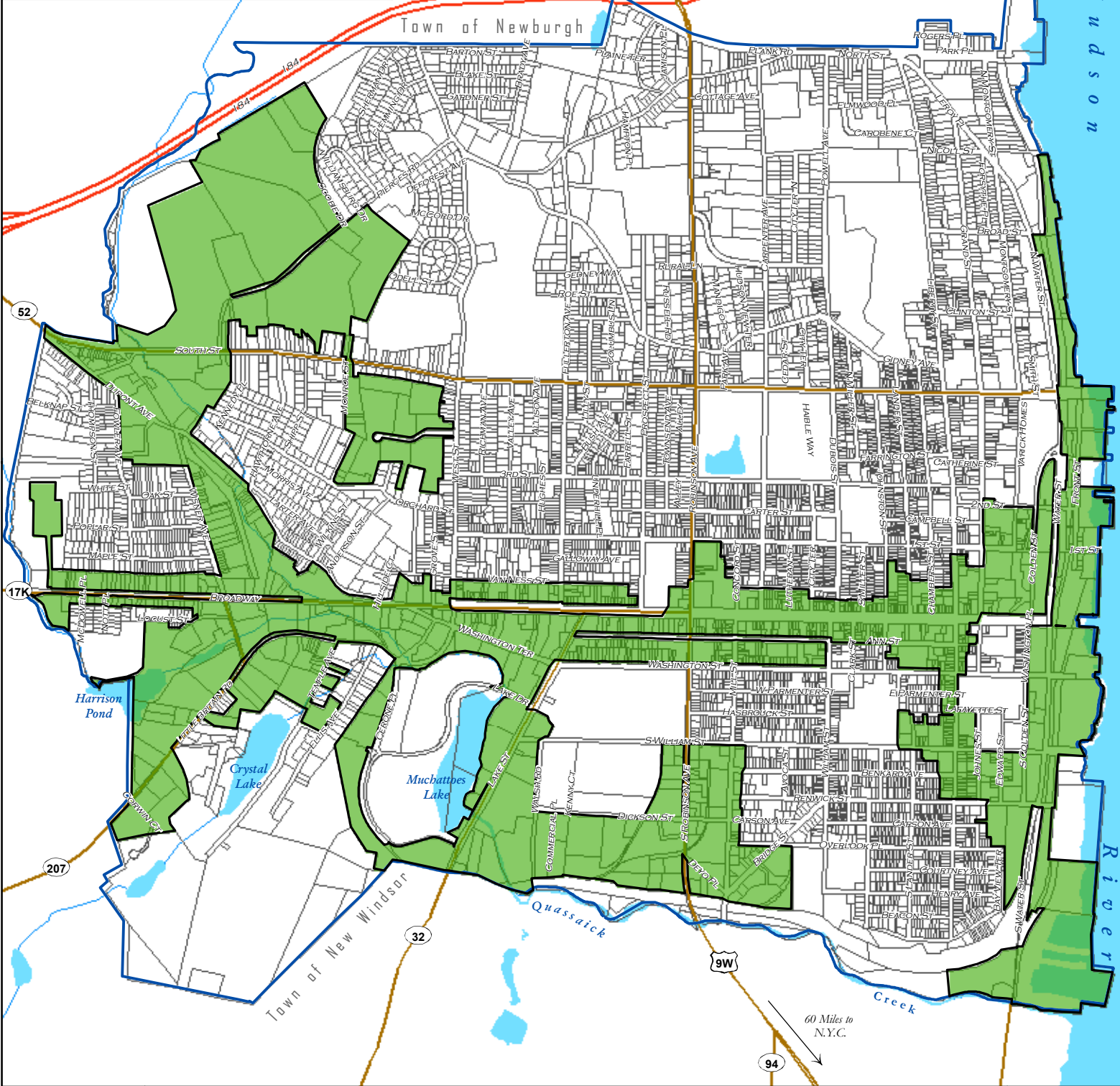


**NEWBURGH - STEWART EMPIRE ZONE**

Area 1: City of Newburgh with Town of New Windsor & Town of Newburgh (877 Acres).  
 For more information, please visit Orange County New York Government Center at [www.orangetownny.gov/orgmain.asp?storyID=3212&orgID=194&storyTypeID=1&sid](http://www.orangetownny.gov/orgmain.asp?storyID=3212&orgID=194&storyTypeID=1&sid)



**NORTH**

FOR VISUAL REFERENCE ONLY

DISCLAIMER: Maps and data are provided without warranty concerning the accuracy, completeness, or suitability for any particular purpose. City of Newburgh makes no representations and assumes no liability from any damage arising out of reliance upon the information contained herein.

**EMPIRE ZONE**

For the Portion Inside of the City of Newburgh ONLY (Appx. 697 Acres)

**LEGEND:**

- Current Empire Zone (2008)
- Municipal Boundary

0 1,250 2,500 5,000 Feet

0 0.125 0.25 0.5 Miles

Date: 7/7/2008  
 Prepared by: City of Newburgh GIS (845) 569-7488  
 G:\Project\Planning\Municipal EmpireZone.mxd  
 G:\Map Gallery\Planning\EmpireZone.pdf

