

# City of Newburgh

## Press Release

83 Broadway, Newburgh, N.Y. 12550  
(845) 569-7354 – (845) 569-7370

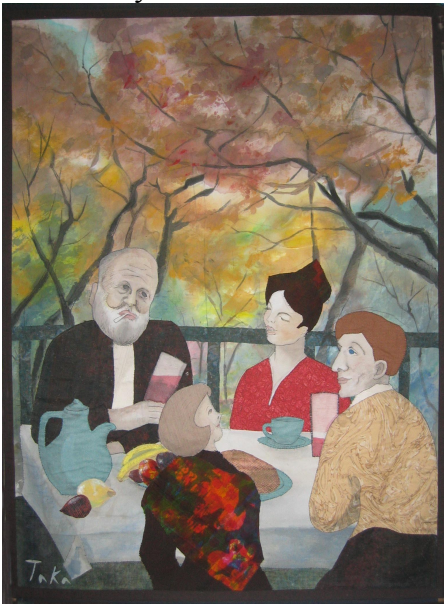
*for immediate release*

May 23, 2006

### **Works by Taka Rothenberg at Downing Park Visitors Center**

The Downing Park Planning Committee is pleased to announce that the June exhibit in the Visitors Center Gallery will feature the multi-faceted work of Taka Rothenberg. Rothenberg, who was born in Tokyo, Japan, first studied painting there with Seiji Togo of the Nika Group. After coming to the United States in 1962, she continued her studies at the Corcoran College of Art and Design in Washington, DC, and later, the Art Students League in New York City, where she mastered painting, drawing, etching, and watercolor.

Rothenberg moves comfortably from one medium to another. She has illustrated two books of poems with line drawings and watercolor, “Big and Little Grown up Poems” and “Tatiana’s World”, both by her husband, Bennett Rothenberg. For the past several years, she has made fabric her medium of choice, creating wonderful, neo-naturalistic scenes of people, animals and birds. She calls these works “Vivid Tableaux” and each tells a story.



She says, “Today there is complete freedom of expression in what materials to use as long as they are true to the artist’s emotions. I use craft medium, which is cloth, combined with acrylic painting in an attempt to give form to emotions such as joy, sympathy, irony, and so forth.”

Since 1996, Rothenberg’s work has been exhibited widely in the Hudson Valley. One of her fabric Tableaux was included in the International Art Expo at the Jacob Javits Convention Center in 2004. The exhibit here in the Visitors Center will include a representative selection of her unique and varied work.

Rothenberg is a Lifetime member of the Art Students League of NY, a member of the Art Society of Kingston (ASK), and the Dutchess, Orange and Green County Arts Councils. Her name and work have been registered in the archives of The National Museum for Women in the Arts (2003), and the United States Holocaust Memorial Museum (2005).

The Rothenberg exhibit will be on view June 1-30 at the Visitors Center Gallery, located in the Shelter House in Downing Park, at Carpenter Avenue and Third Street in Newburgh. Gallery hours are 11 a.m.-5 p.m. daily. An opening reception is scheduled for Saturday, June 10 from 2-4 p.m. The public is invited to come and meet the artist. For information call (845) 565-5559.